



Card Edge Connectors

EDAC

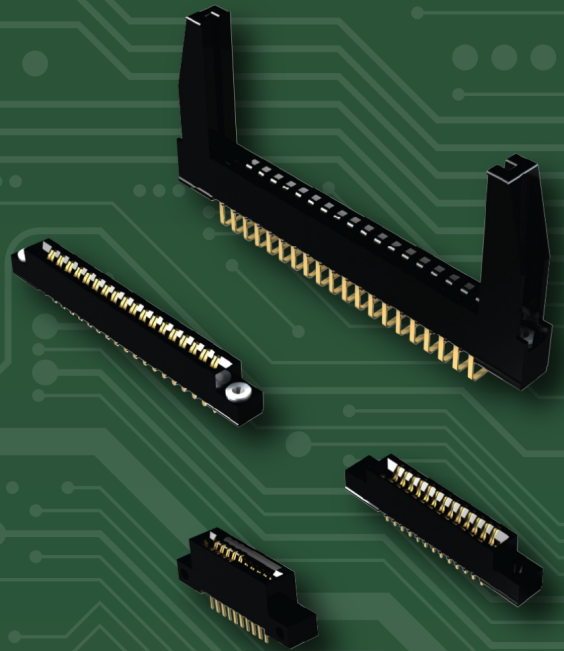


Card Edge Connectors

One of EDAC's original product families, the Cardedge+ family of card edge connectors has grown to become one of the largest offerings available in the market. Available in a number of contact spacings, with multiple options for contact terminations, plating thicknesses, and mounting styles, providing our customers more flexibility with their designs.

Features

- Card edge connectors are available in excess of 460,000 standard parts, with the capability to produce custom variations
- Contact spacings of 0.050", 0.100", 0.125", 0.150", 0.156" and 0.200"
- Selective gold plating on the contact mating area or gold all over with nickel underplating
- PC tail, wire wrap, solder eyelet, extender board tail, and other specialized contact options are available
- From 2 to 144 contacts in single, bridged, and dual rows with or without card supports



Card Edge Connectors

Series	Contact Pitch	Row Spacing	No. of Rows	Contacts per Row	Contact Options	Mounting Options	Polarization
243	0.200" (5.08mm)	0.200" (5.08mm)	1 or 2	2 or 3	1	1	Available
302	0.050" (1.27mm)	0.100" (2.54mm)	2	2 - 62	3	1	N/A
305/315/355	0.156" (3.96mm)	0.140" (3.56mm)	2	6 - 43	5	10	Available
306/316/356	0.156" (3.96mm)	N/A (Centerline)	1	6 - 43	3	10	Available
307/357	0.156" (3.96mm)	0.200" (5.08mm)	1 or 2	6 - 44	25	10	Available
310	0.156" (3.96mm)	0.200" (5.08mm)	1 or 2	30	18	6	Available
317	0.156" (3.96mm)	0.200" (5.08mm)	1 or 2	6 - 43	5	7	Available
322	0.156" (3.96mm)	0.200" (5.08mm)	1 or 2	22	25	3	Available
325	0.100" (2.54mm)	0.300" (7.62mm)	1 or 2	5 - 61	3	4	Available
333	0.156" (3.96mm)	0.200" (5.08mm)	1 or 2	6 - 43	14	7	Available
336	0.156" (3.96mm)	0.188" (4.87mm)	1 or 2	6 - 43	1	7	Available
337/387	0.156" (3.96mm)	0.200" (5.08mm)	1 or 2	6 - 43	14	10	Available
338	0.156" (3.96mm)	0.200" (5.08mm)	1 or 2	10, 15, 18, 22, 28	1	9	Available
341/391	0.100" (2.54mm)	0.140" (3.56mm)	1 or 2	5 - 60	8	6	Available
342/392	0.100" (2.54mm)	0.200" (5.08mm)	1 or 2	5 - 58	14	7	Available
345/395	0.100" (2.54mm)	0.200" (5.08mm)	1 or 2	5 - 72	15	10	Available
346/396	0.125" (3.18mm)	0.250" (6.35mm)	1 or 2	5 - 50	12	9	Available
379	0.150" (3.81mm)	0.200" (5.08mm)	1 or 2	6, 20, 26, 32	11	6	Available
395AT	0.100" (2.54mm)	0.200" (5.08mm)	2	49	13	1	Available

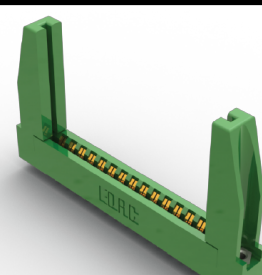
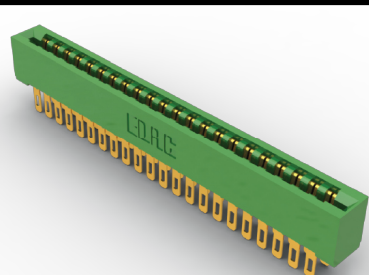
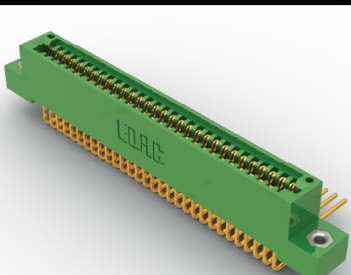
Rugged board to board connections

High reliability backplane interconnect solutions



For More Information

edac.net



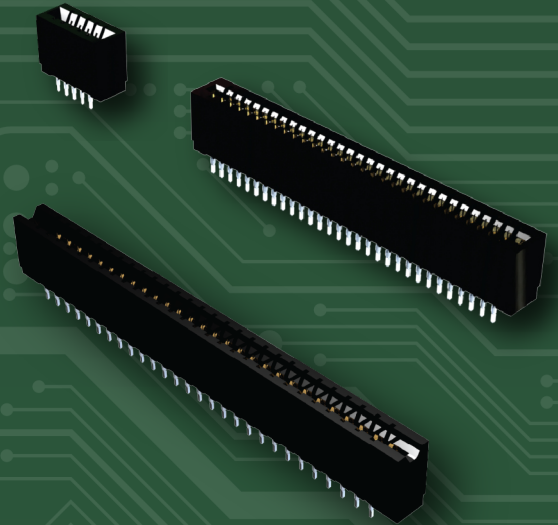


Press Fit Card Edge Connectors

EDAC offers a broad range of press-fit card edge connectors. Our product utilizes a contact design that allows for ease of assembly into the PCB with the use of simple flat rock tooling. Once installed, this solderless connection provides superior shock and vibration resistance while providing significant labor savings.

Features

- 0.100", 0.125", and 0.156" contact spacings, in single or dual row with up to 150 contacts
- Press-fit compliant section for gas tight connection and solderless operations
- Accepts between and in contact polarizing keys
- Low profile or high profile body available
- Contact termination options include PC tail or wire wrap.



Press Fit Card Edge Connectors

Series	Contact Pitch	Row Spacing	No. of Rows	Contacts per Row	Contact Options	Insulator Options	Polarization
717 Low Profile	0.156" (3.96mm)	0.200" (5.08mm)	1 or 2	5 - 43	7	1	Available
725 Low Profile	0.100" (2.54mm)	0.200" (5.08mm)	1 or 2	5 - 75	7	1	Available
737 High Profile	0.156" (3.96mm)	0.200" (5.08mm)	1 or 2	5 - 43	7	2	Available
745 High Profile	0.100" (2.54mm)	0.200" (5.08mm)	1 or 2	5 - 75	7	2	Available
746 High Profile	0.125" (3.18mm)	0.250" (6.35mm)	1 or 2	5 - 60	8	2	Available

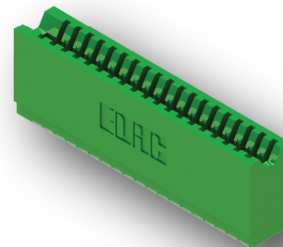
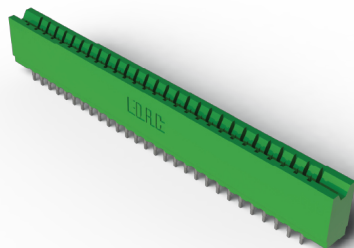
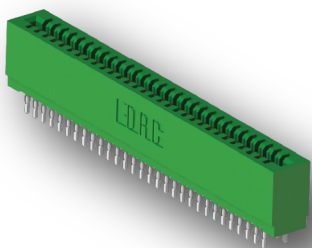
Rugged board to board connections

High reliability backplane interconnect solution



For More Information

edac.net



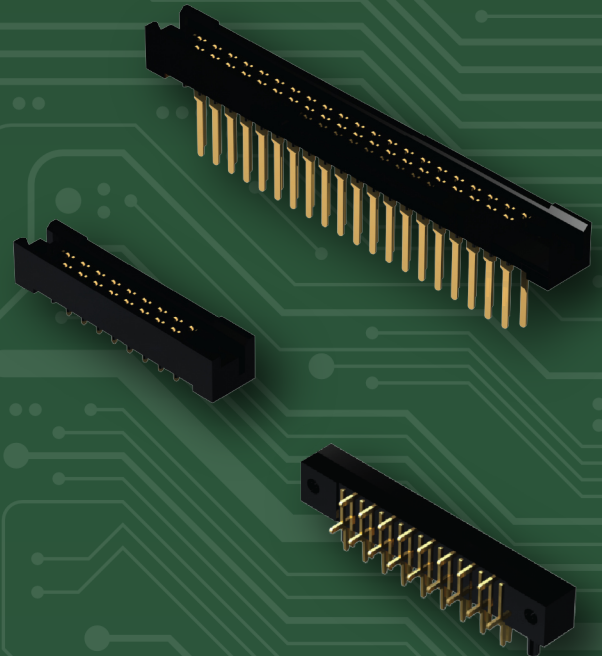


Metal to Metal Card Edge Connectors

The EDAC metal-to-metal card edge connectors are a two piece, high reliability connector solution. Utilizing our EDAC hermaphroditic contacts, the fork-like design incorporates four mating surfaces providing a gas tight connection with high shock and vibration resistance. For board-to-board, or wire-to-board applications, they can be used with 0.062" or 0.093" thick printed circuit boards.

Features

- EDAC hermaphroditic contact mating design
- High shock and vibration resistance with 10 amp current rating
- 0.200" (5.08mm) contact spacing X 0.125" (3.18mm) row spacing with staggered grid
- Plug termination is a PC tail
- Receptacle terminations include PC tail, wire hole, and wire wrap

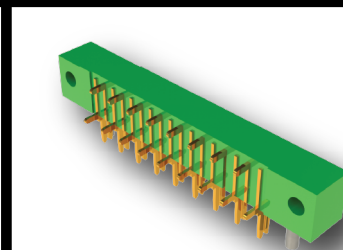
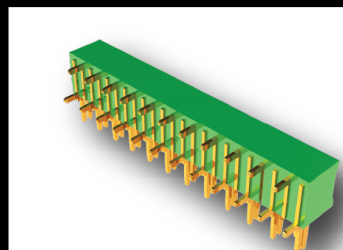
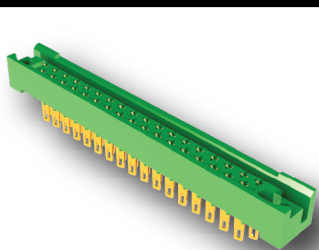


Metal to Metal Card Edge Connectors

Series	Contact Pitch	Row Spacing	No. of Rows	Contacts per Row	Contact Options	Mounting Options	Polarization
408/424 Receptacle	0.200" (5.08mm)	0.125" (3.18mm) or 0.150" (3.81mm)	2	17, 23, 29, 35, 41, 47	11	2	Available
415/438 Receptacle	0.200" (5.08mm)	0.125" (3.18mm)	2	17, 23, 29, 35, 41, 47	6	2	Available
421/422/423 Plug	0.200" (5.08mm)	0.300" (7.62mm)	2	17, 23, 29, 35, 41, 47	2	3	Available

Rugged board to board connections

Ultra high continuity & shock and vibration resistant



EDAC

For More Information

edac.net



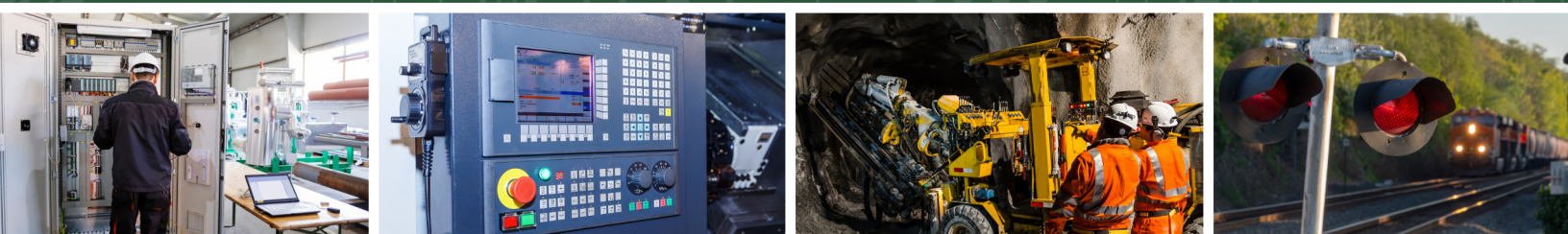
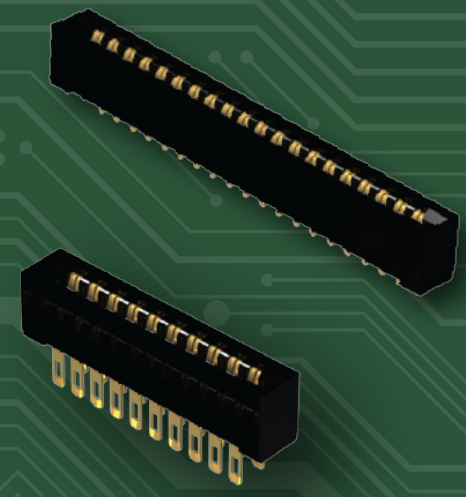


High Temp Card Edge Connectors

EDAC high temp card edge connectors utilize high temp insulators ideal for various soldering processes. All of the features of our standard card edge are available in these ruggedized versions. A solid performer over a wide temperature range from -40°C to +125°C.

Features

- 5 - 144 contacts in single or dual row
- Up to 5 amps contact rating
- Wide variety of mounting options
- Standard PC tail, 90 degree bend, extender board bend, wire hole, wire wrap, or surface-mount (SMT) contacts
- Diallyl phthalate or polyphenylene sulfide high temp material

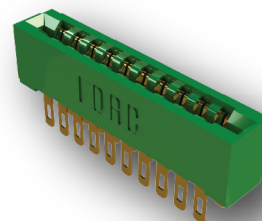
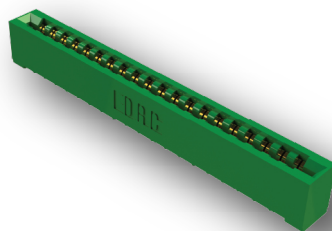
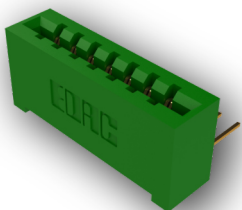


High Temp Card Edge Connectors

Series	Contact Pitch	Row Spacing	No. of Rows	Contacts per Row	Contact Options	Mounting Options	Polarization
Diallyl phthalate							
807	0.156" (3.96mm)	0.200" (5.08mm)	1 or 2	6 - 44	25	7	Available
833	0.156" (3.96mm)	0.200" (5.08mm)	1 or 2	6 - 43	14	7	Available
837	0.156" (3.96mm)	0.200" (5.08mm)	1 or 2	6 - 43	14	7	Available
842	0.100" (2.54mm)	0.200" (5.08mm)	1 or 2	5 - 58	14	7	Available
845	0.100" (2.54mm)	0.200" (5.08mm)	1 or 2	5 - 72	15	7	Available
846	0.125" (3.18mm)	0.250" (6.35mm)	1 or 2	5 - 50	12	7	Available
Polyphenylene sulfide							
802	0.050" (1.27mm)	0.100" (2.54mm)	2	2 - 62	4	3	N/A
857	0.156" (3.96mm)	0.200" (5.08mm)	1 or 2	6 - 44	25	7	Available
887	0.156" (3.96mm)	0.200" (5.08mm)	1 or 2	6 - 43	14	7	Available
892	0.100" (2.54mm)	0.200" (5.08mm)	1 or 2	5 - 58	14	7	Available
895	0.100" (2.54mm)	0.200" (5.08mm)	1 or 2	5 - 72	15	7	Available
896	0.125" (3.18mm)	0.250" (6.35mm)	1 or 2	5 - 50	12	7	Available

High insulation temperature for IR reflow process

Solution for board-to-board connection

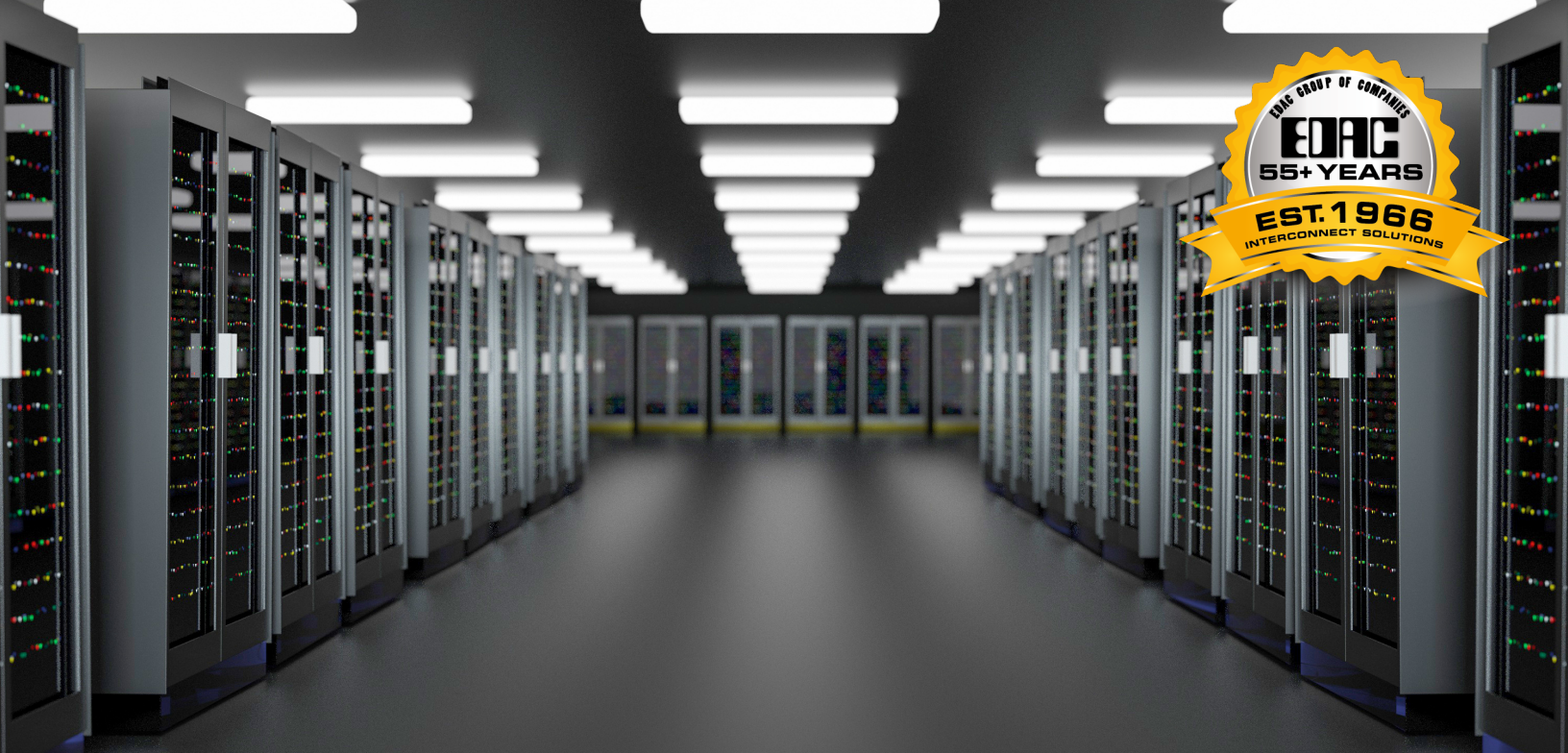


EDAC

For More Information

edac.net



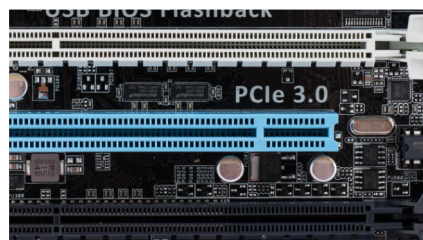
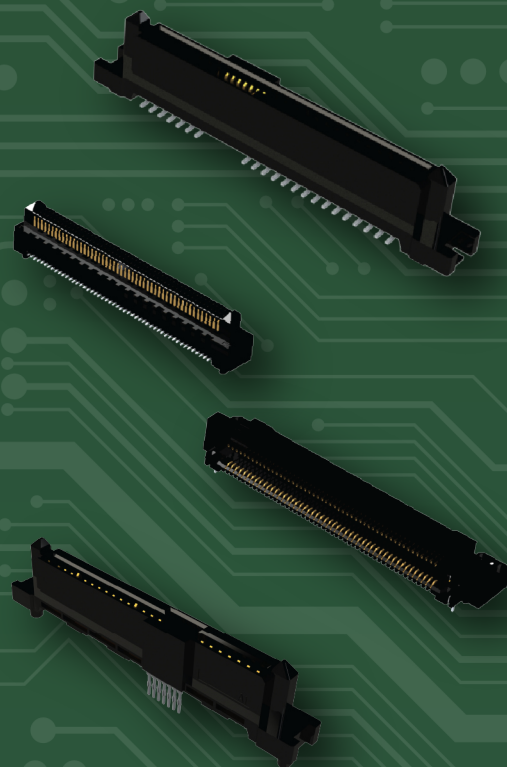


High Speed Card Edge Connectors

EDAC PCIE 3.0 and SAS card edge connectors are a high speed board-to-board interconnect solution. Differential pair signaling provides for low insertion loss in a dense package that conserves valuable board space. Widely used in server backplanes, these fine pitch connectors come in a variety of orientations and terminations to meet all design parameters.

Features

- PCIE 3.0 available in 20 - 200 contacts
- SAS available in 29 or 68 contacts
- Data transmissions up to 21 Gbps
- Vertical or right angle orientations
- SMT or press-fit terminations
- SAS 3.0 and PCIE 3.0 compliant

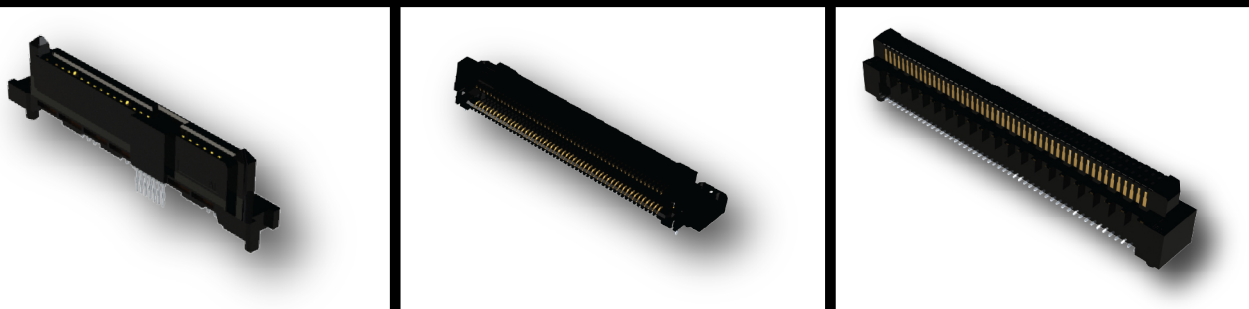


High Speed Card Edge Connectors

Series	Contact Pitch	No. of Contacts	Contact Termination	Data Speed	Orientation
PCIE 3.0					
370	0.03" (0.8mm)	20, 100, 200	SMT	21 Gbps	Vertical
470	0.05" (1.27mm)	100 or 160	SMT	18 Gbps	Vertical
472	0.03" (0.8mm)	100 or 150	SMT	19 Gbps	Vertical
473	0.03" (0.8mm)	100 or 150	SMT	19 Gbps	Right Angle
SAS					
271	0.05" (1.27mm) Signal and 0.03" (0.8mm) SCSI	68	SMT	16 Gbps	Vertical
272	0.05" (1.27mm) Signal and 0.03" (0.8mm) SCSI	29	Press-fit	16 Gbps	Vertical
273	0.05" (1.27mm) Signal and 0.03" (0.8mm) SCSI	29	SMT	16 Gbps	Vertical

High Speed connectors for solid data infrastructure

SAS 3.0 and PCIE 3.0 full compliance

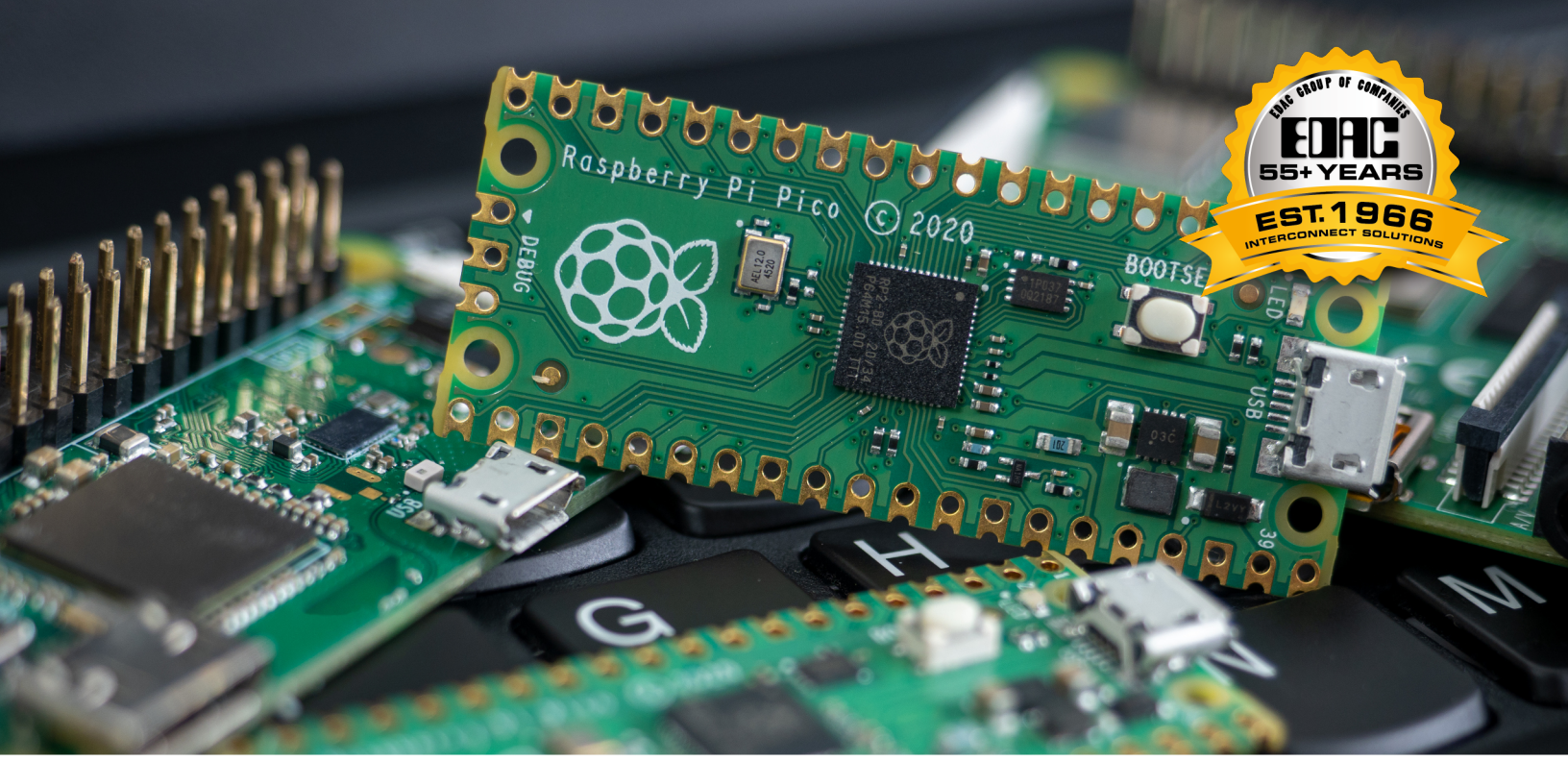


EDAC

For More Information

edac.net



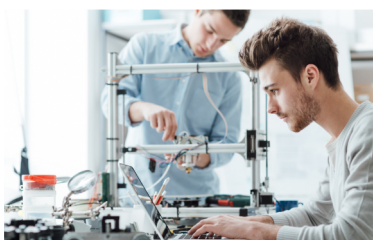
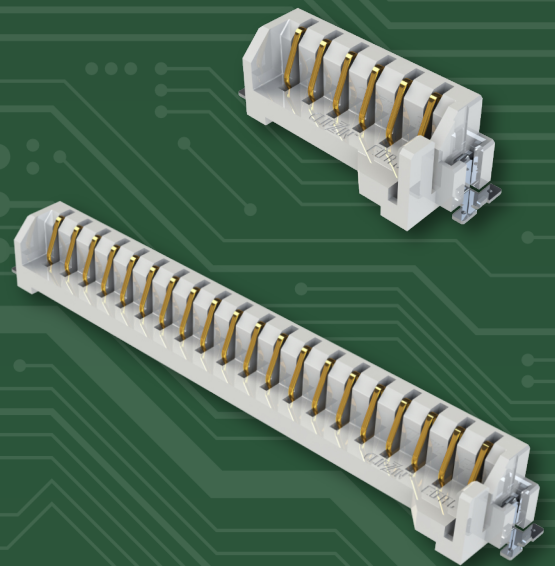


ClipZin SMT Card Edge Connectors

EDAC's ClipZin is a printed circuit board (PCB) mounted card edge connector that allows single castellated board modules to be mounted to the PCB. Featuring a low-profile with surface mount installation, the ClipZin will allow rapid connection and disconnection of the module, while a retention clip ensures that the board will not un-mate during use. This makes it the ideal solution for development, while also providing the security required for production applications.

Features

- Available in 6, 8, 17, and 20-way positions
- Eliminates the need to solder pin headers and mount single board modules to the PCB
- Enables quick mating and un-mating to single castellated module boards allowing for rework on exiting board or to swap out for a new one to expedite product testing and programming
- Retention clips to further secure the boards to the PCB
- Reliable and consistent connection between contacts and edge of boards

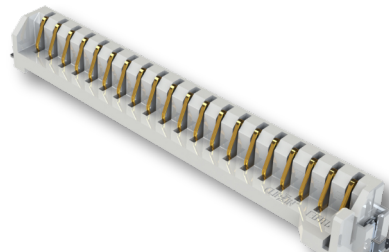
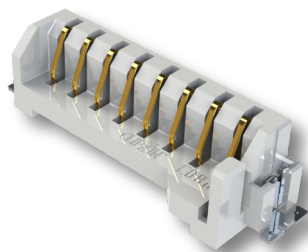
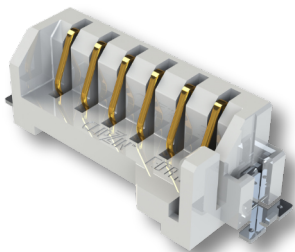


ClipZin SMT Card Edge Connectors

Series	Contact Pitch	No. of Contacts	Contact Termination	Retention	Current Rating
299	0.100" (2.54mm)	6, 8, 17, 20	SMT	Yes, Retention Clip	1A Max / Contact

Up to 500 mating cycles with quick secure latching

Built to last in any environment with operating temperatures of -40°C to +85°C



EDAC

For More Information

edac.net



EDAC

161 Alden Road
Unit 7 & 8
Markham, Ontario
Canada
L3R 3W7
Tel: +1 416 754 3322
E-mail: support@edac.net

EDAC Europe

12 Fleming Close,
Park Farm North,
Wellingborough,
United Kingdom
NN8 6UF
Tel: (44) 1933-427300
Fax: (44) 1933-677611
E-mail: enquiries@edaceurope.net

Established in 1966, EDAC soon became a world leader in providing connectors for card edge and rack and panel applications. Since then, we have expanded our product offering to include one of the widest ranges of interconnect solutions in the world. Products include D-Sub, RJ45, USB, HDMI, inline plug and socket, headers, spring loaded pogo pin, and waterproof connectors. Cable assemblies and custom solutions are also available. Our innovation guides us into new customer opportunities as we challenge the status quo. This belief resonates throughout the organization and results in exceptional quality service globally.



Connect With Us . . . Experience Makes The Difference